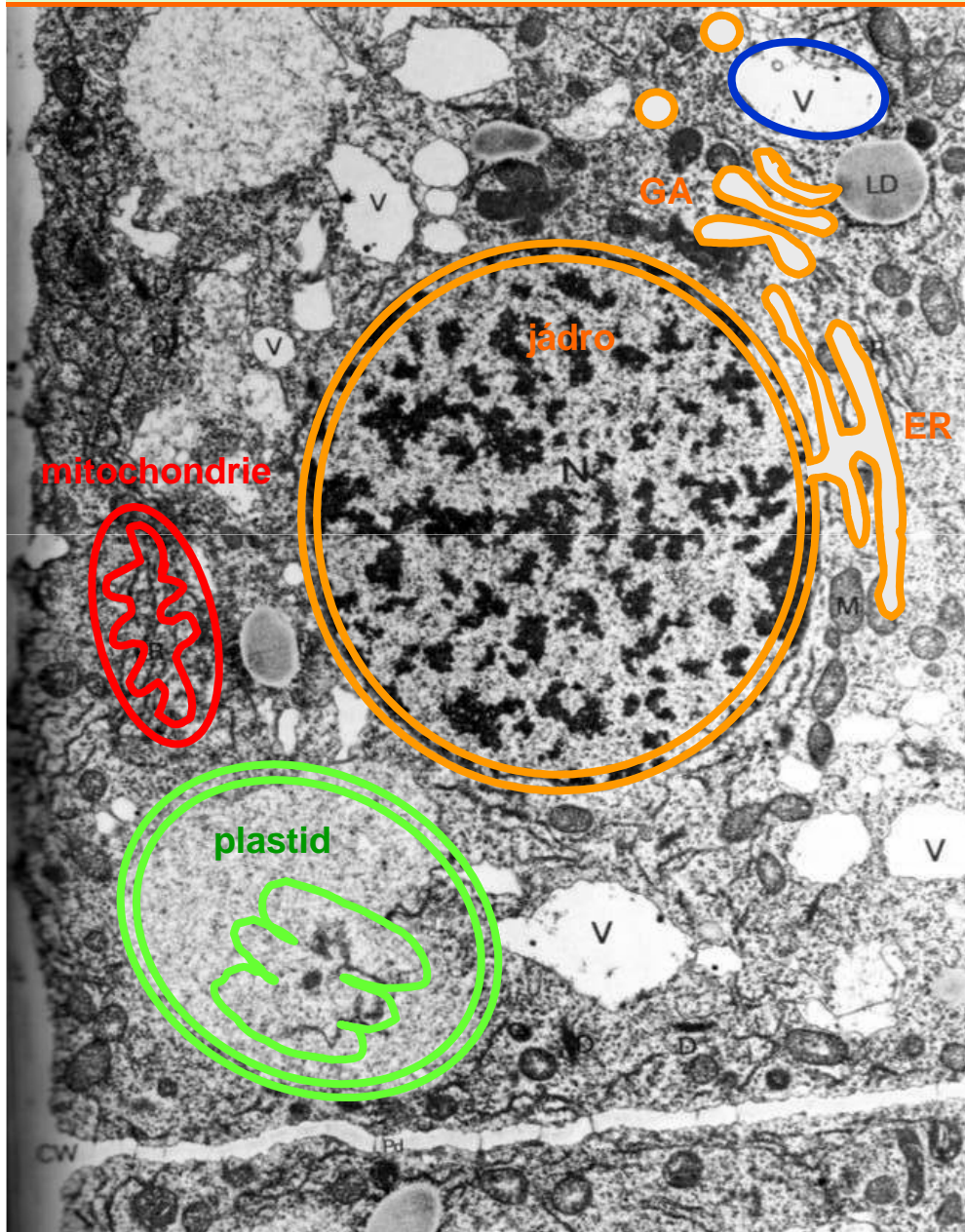


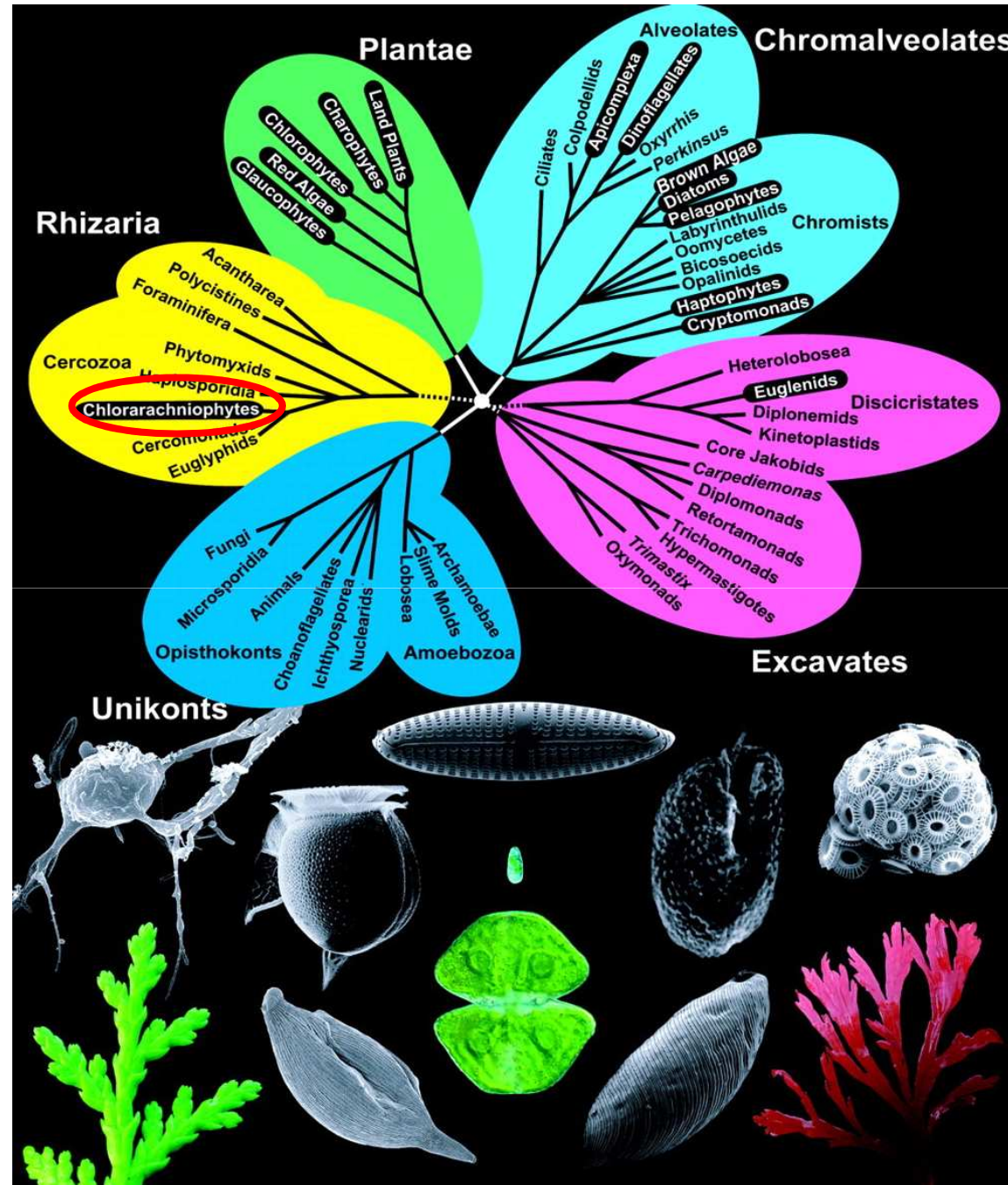
Organely a kompartmenty

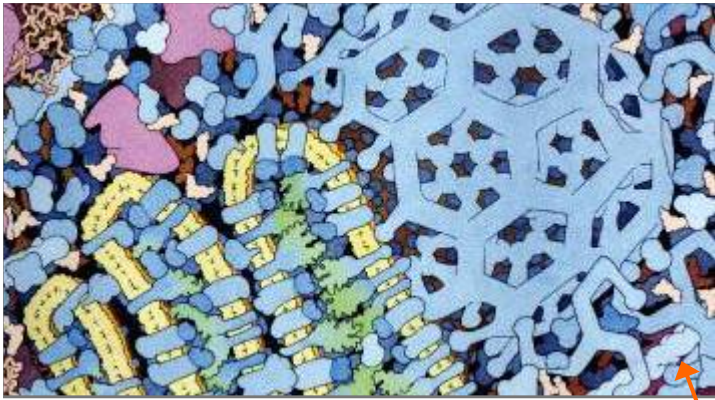


vnitrobuněčné membrány vymezují buněčné kompartmenty:

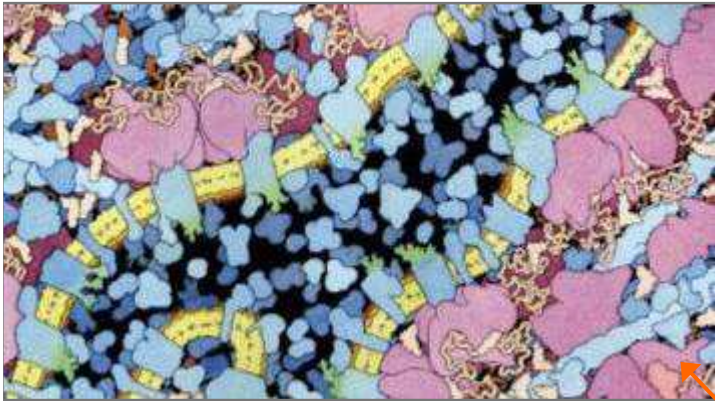
- jádro
- mezimembránový prostor jaderné membrány
- endoplasmatické retikulum
- Golgiho aparát
- váčky odvozené od ER a GA
- vakuola
- endosom
- peroxisomy
- glyoxysomy
- mezimembránový prostor plastidu
- stroma plastidu
- thylakoidy plastidů
- mezimembránový prostor mitochondrie
- matrix mitochondrie

Bohatý svět eukaryot

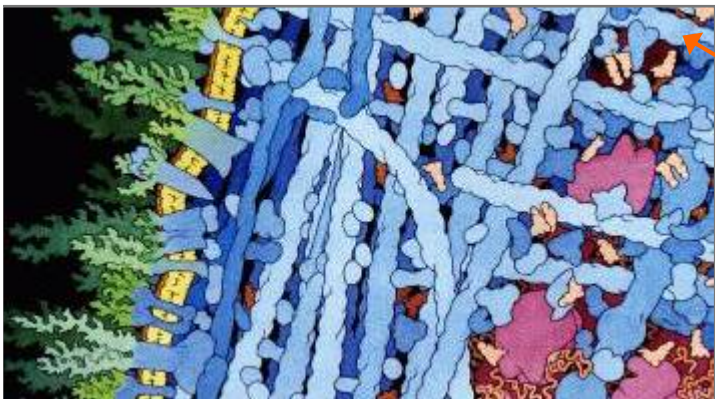




3. pučící váček



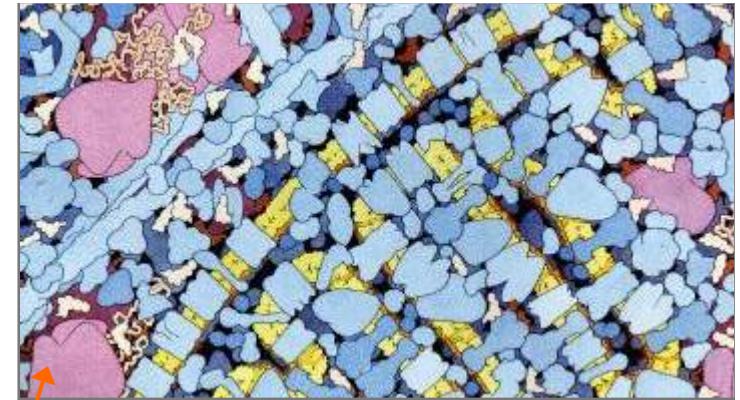
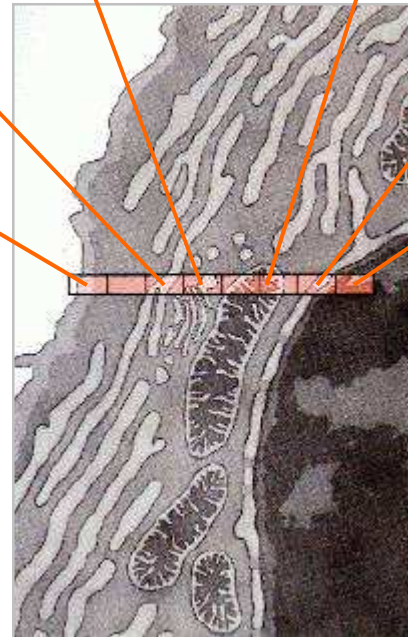
2. endoplasmatické retikulum



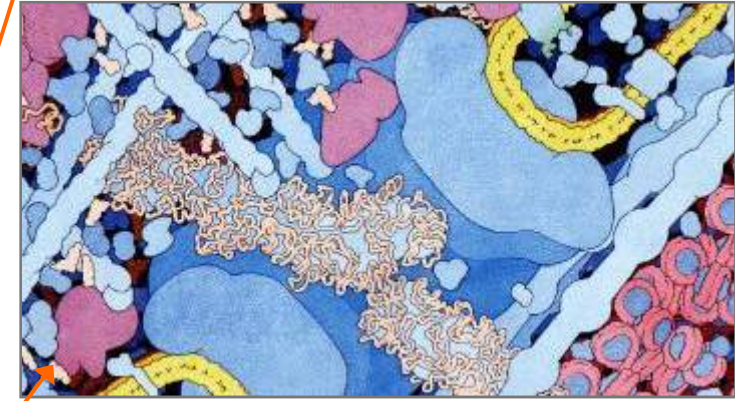
1. cytoplasmatická membrána

cytoplasma je organizovaná
nehomogenní
(komplexy, koncentrační
gradienty)
látky se nepohybují
prostou difúzí
(metabolické dráhy,
cytoskelet)

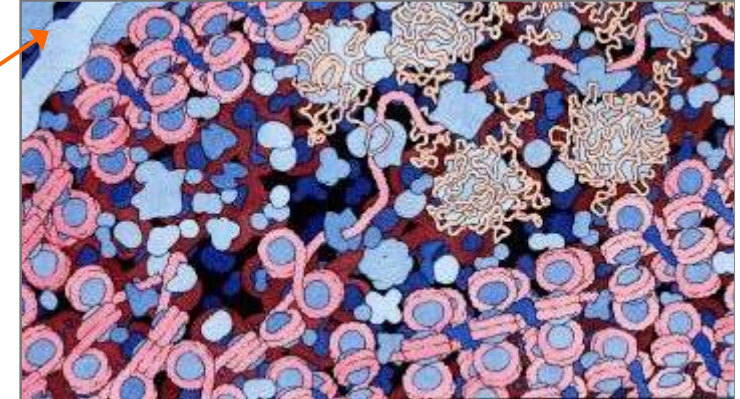
David S. Goodsell



4. mitochondrie



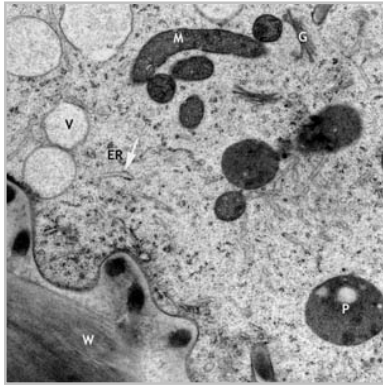
5. jaderná membrána



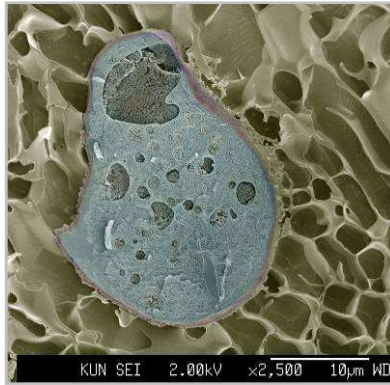
6. jádro

Mikroskopické metody

G. Horowitz et al.

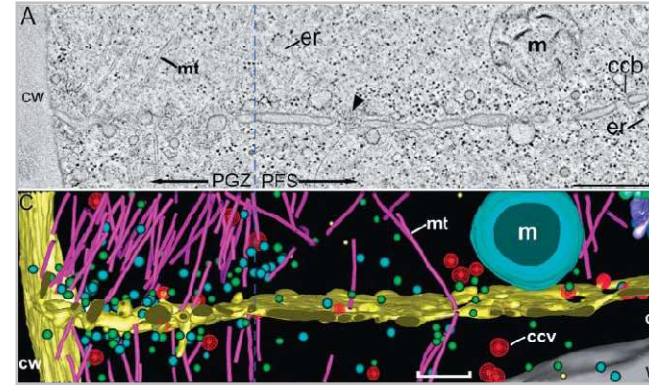


elektronová transmisní m.



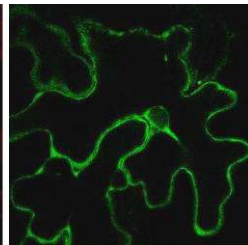
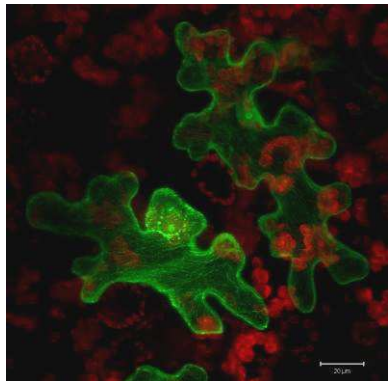
elektronová skenovací m.

M. Otegui a A. Stehelin



elektronová tomografie

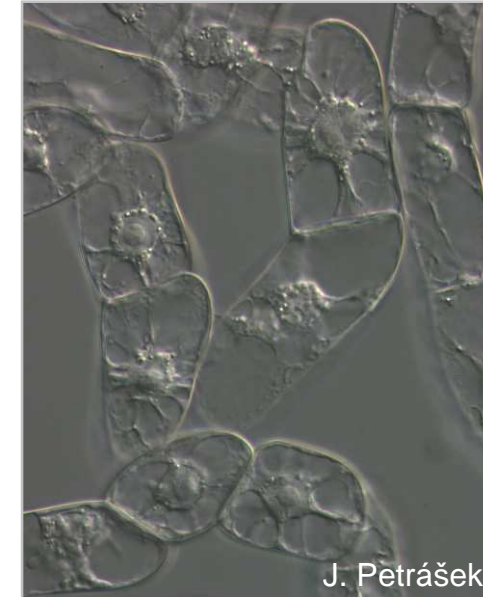
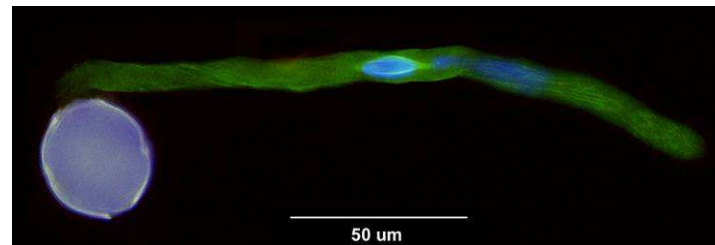
světelná m. s diferenciálním kontrastem



konfokální
mikroskop

fluorescenční mikroskopie

fluorescenční
mikroskop



J. Petrášek